



DOGON | GROUP

PROPERTIES

APPLEGARTH FLOOR PLANS



HEAD OFFICE **021 433 2580**

dogongroup.com

A visionary company with decades of experience



DOGON | GROUP

PROPERTIES

COMPANY PARTICULARS

Established in 2002, Dogon Group Properties has proven to be a true real estate success story. The Dogon name has become synonymous with the proficient and effective marketing and selling of premium grade properties in Cape Town and particularly the sought-after Atlantic Seaboard. Dogon Group currently have offices in high profile positions in Sea Point and Southern Suburbs.

Dogon Group Properties prides itself on its unique and focused approach to marketing and sales, providing a comprehensive and tailored solution to ensure that sales occur at the optimum price within a compressed space of time. The company utilizes an evolved and distinctive sales force of highly adept and skilled sales agents who are selected for their extensive experience, professionalism and successful track records.

Headed by Managing Director Alexa Horne, Dogon Group has a dedicated in-house marketing department ensuring that focused and specialized marketing strategies are implemented. The powerful proprietary Dogon Group database combined with its eye-catching and prominent advertising, both in print and digital media, together with our visible network of sales offices support our strong performance on the Western Cape's Atlantic Seaboard, Southern Suburbs, Western Seaboard and surrounding areas.

DOGON GROUP PROPERTIES (PTY) LTD
REGISTRATION NO: 2002/020365/07
REGISTERED WITH THE PPRA - FFC No. F110941
ALEXA HORNE (MANAGING DIRECTOR)

P O BOX 605 SEA POINT 8060
THE KINGS, 101 REGENT ROAD
SEA POINT, SOUTH AFRICA
TEL +27 21 433 2580
FAX +27 21 433 2781

SALES AGENTS



LESLEY RENSBURG
061 439 8225
lesley@dogongroup.com

Registered with the PPRA - Full Status Agent - FFC No. 1152541



LEAH SLEIGH
082 608 3388
leah@dogongroup.com

Registered with the PPRA - Full Status Agent - FFC No. 1198017

HEAD OFFICE **021 433 2580**

dogongroup.com

A visionary company with decades of experience



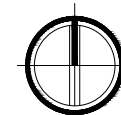
APPLEGARTH

HOUT BAY



KEY:

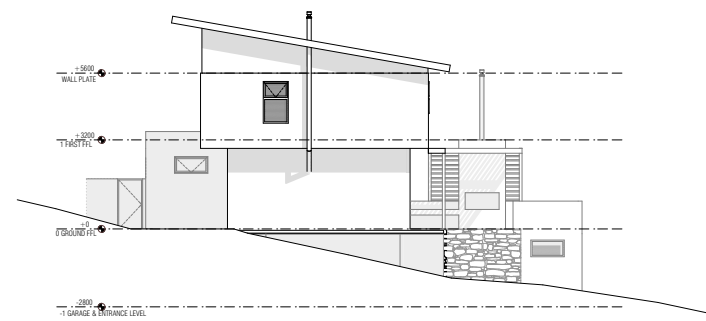
- STYLE A
- STYLE B
- STYLE C
- STYLE D
- STYLE E
- STYLE F
- STYLE G
- DOUBLE DWELLING
- SOLD
- RESERVED





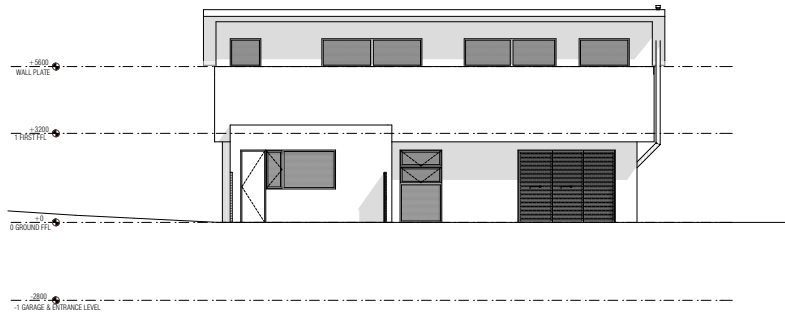
NORTH ELEVATION

 1:100



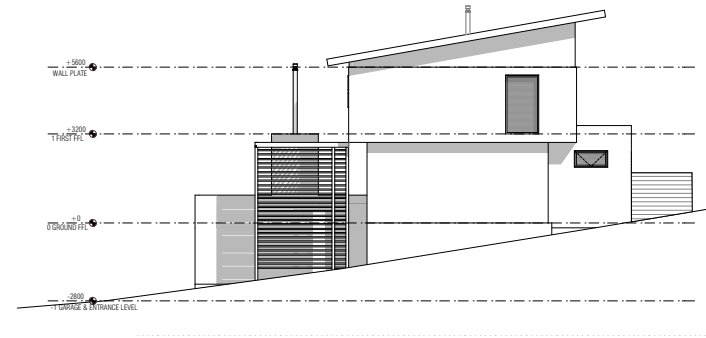
EAST ELEVATION

 1:100



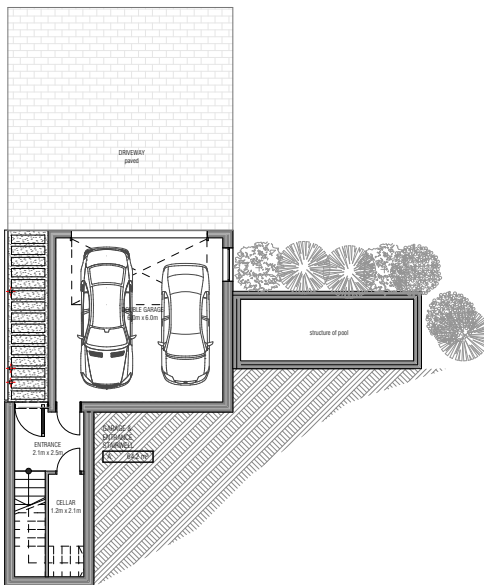
SOUTH ELEVATION

 1:100



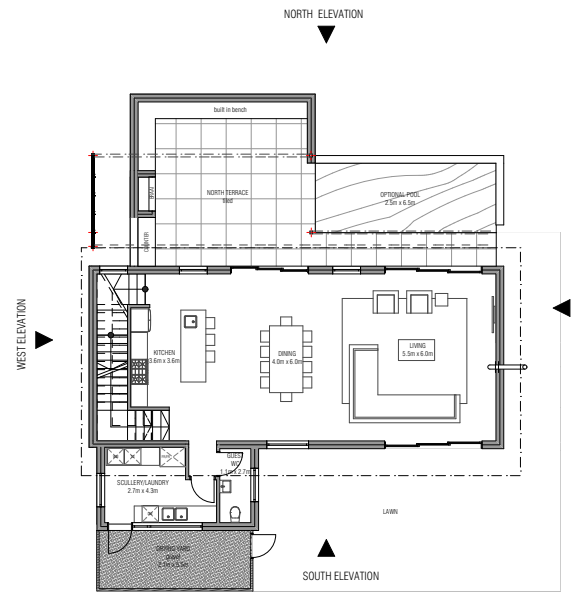
WEST ELEVATION

 1:100



LOWER GROUND FLOOR PLAN

 1:100



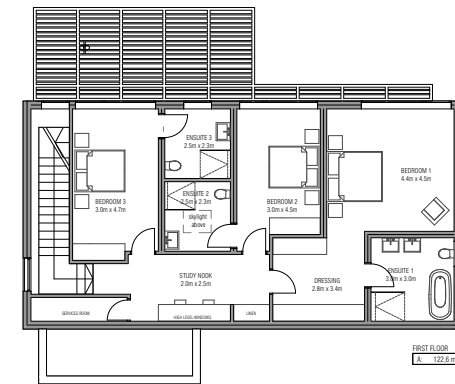
GROUND FLOOR PLAN

 1:100

GROUND FLOOR (INC. GARAGE)

 122.67m²

 TOTAL AREA INCL. GARAGE: 235m²

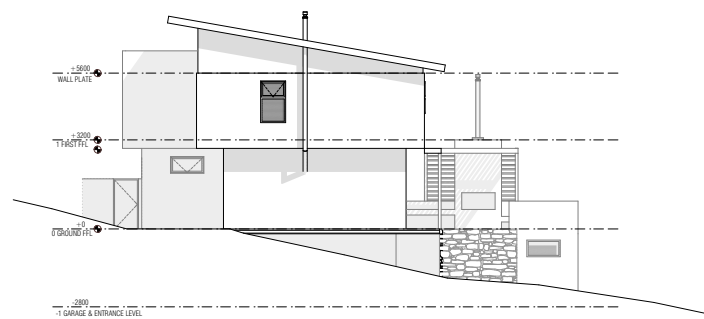


FIRST FLOOR PLAN

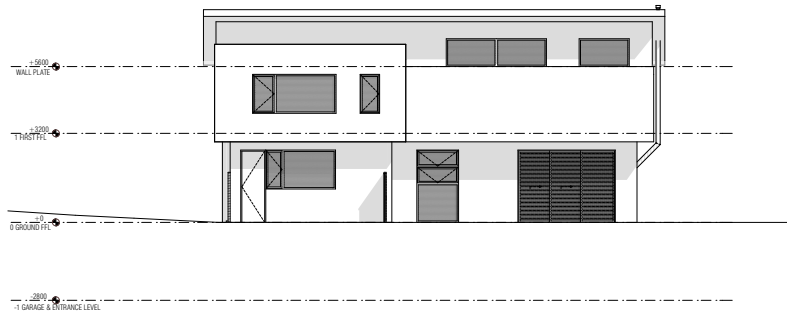
 1:100



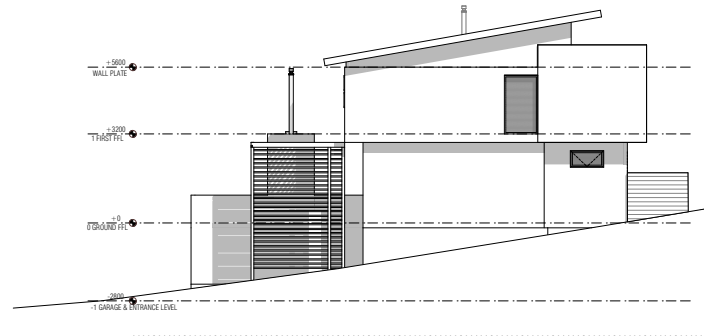
NORTH ELEVATION
1:100



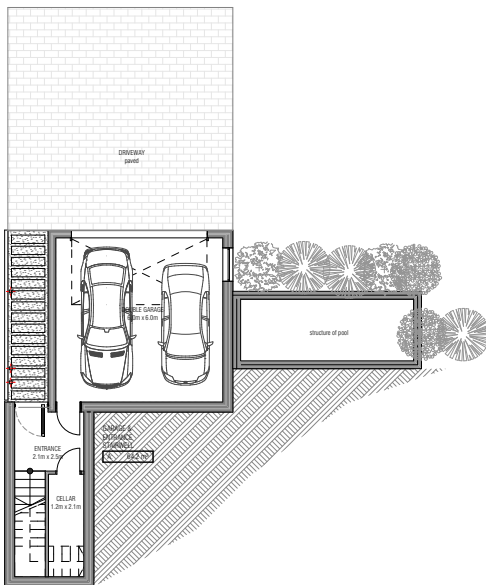
EAST ELEVATION
1:100



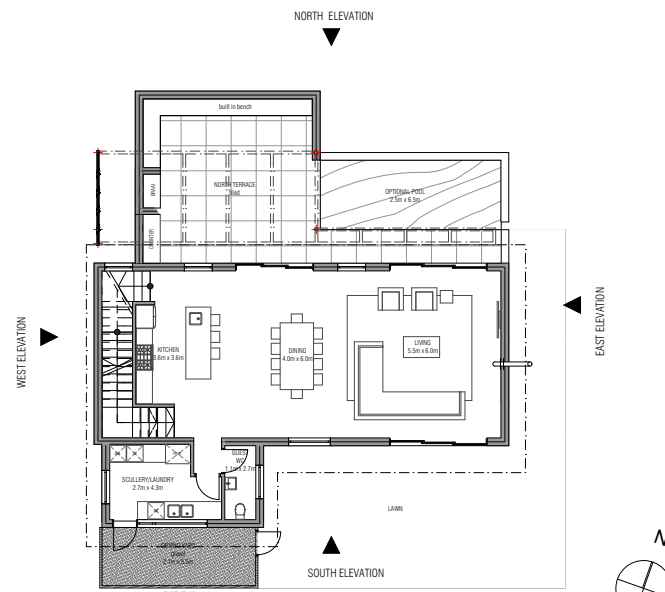
SOUTH ELEVATION
1:100



WEST ELEVATION
1:100

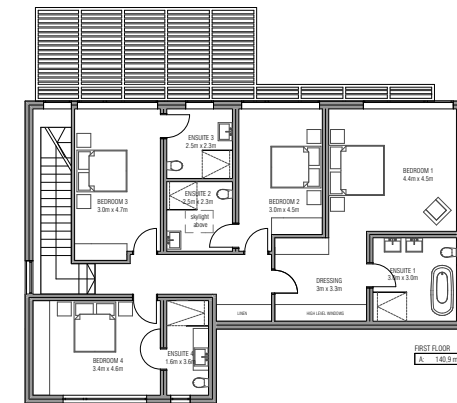


LOWER GROUND FLOOR PLAN
1:100

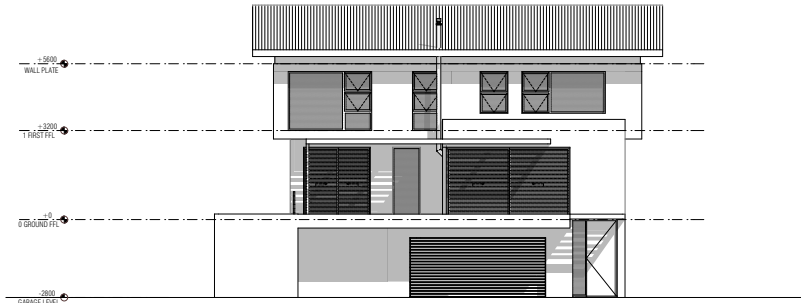


GROUND FLOOR PLAN
1:100

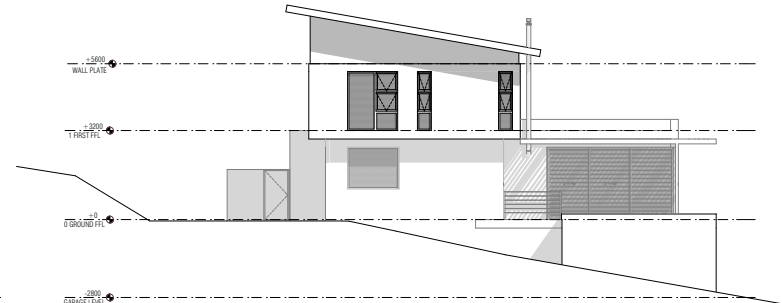
GROUND FLOOR
POOL (OPTIONAL)
11.4 x 6.5m
TOTAL AREA INCL. GARAGE 313m²



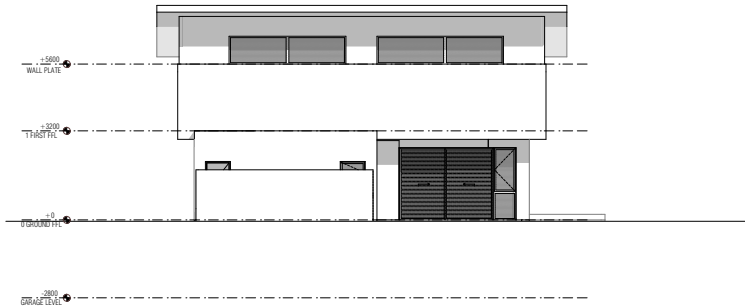
FIRST FLOOR PLAN
1:100



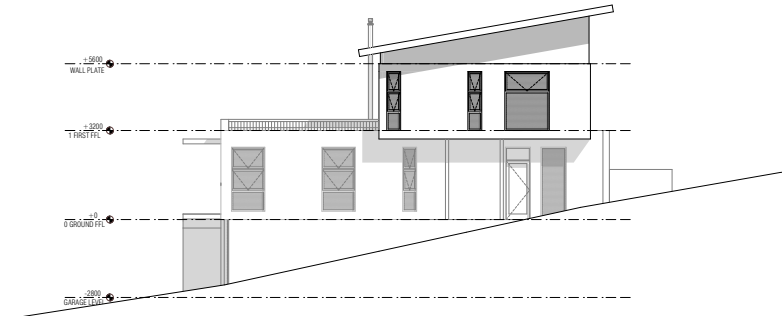
NORTH ELEVATION
1:100



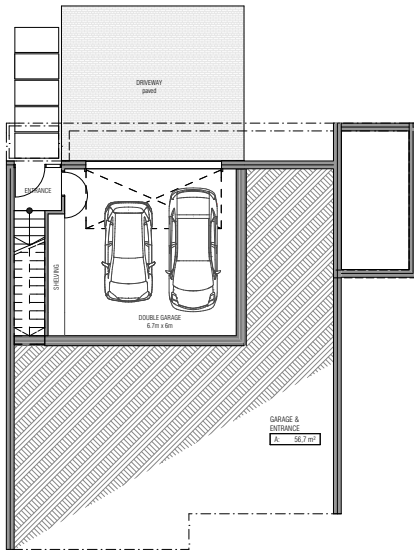
EAST ELEVATION
1:100



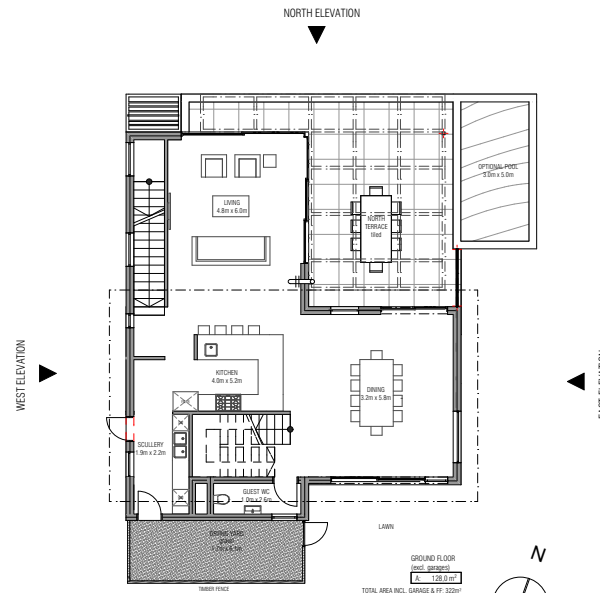
SOUTH ELEVATION
1:100



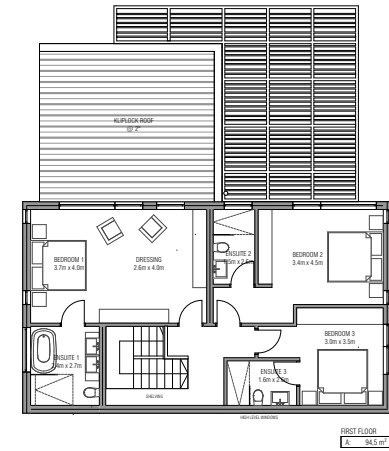
WEST ELEVATION
1:100



BASEMENT
1:100



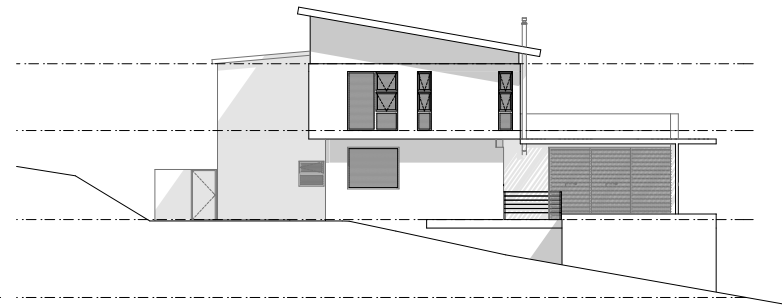
GROUND FLOOR
1:100



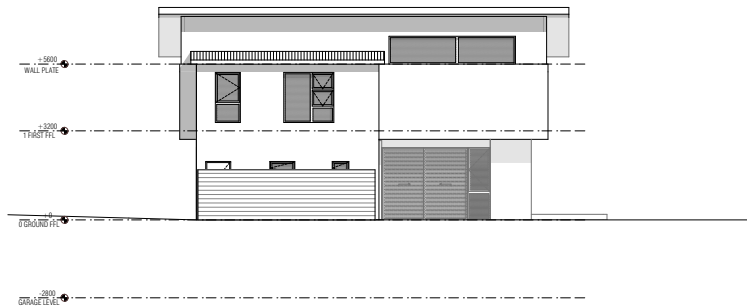
FIRST FLOOR
1:100



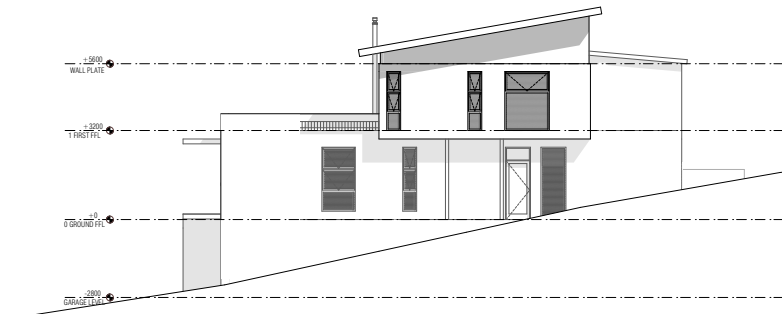
NORTH ELEVATION
1:100



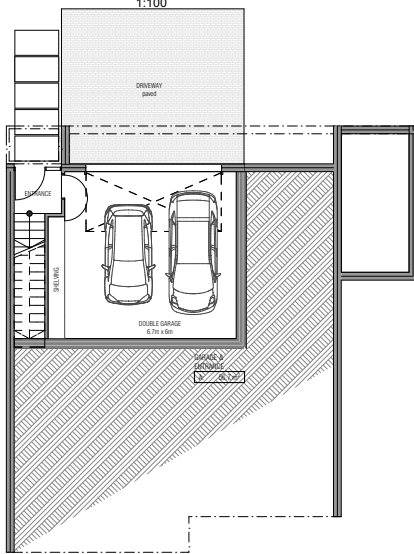
EAST ELEVATION
1:100



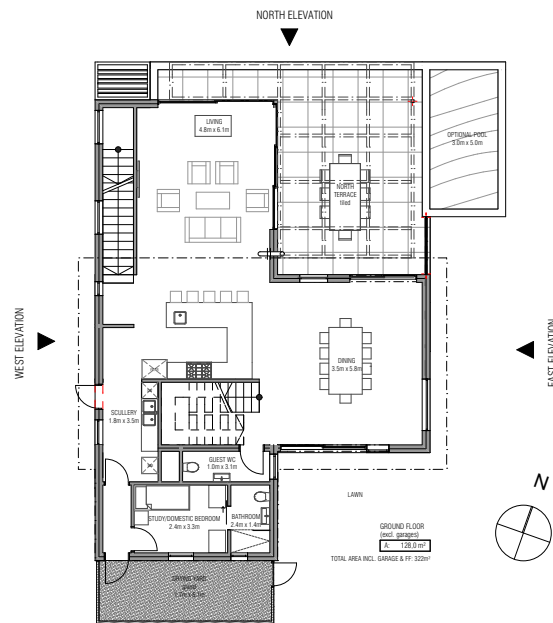
SOUTH ELEVATION
1:100



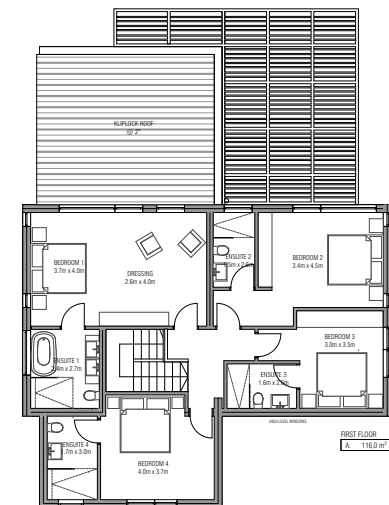
WEST ELEVATION
1:100



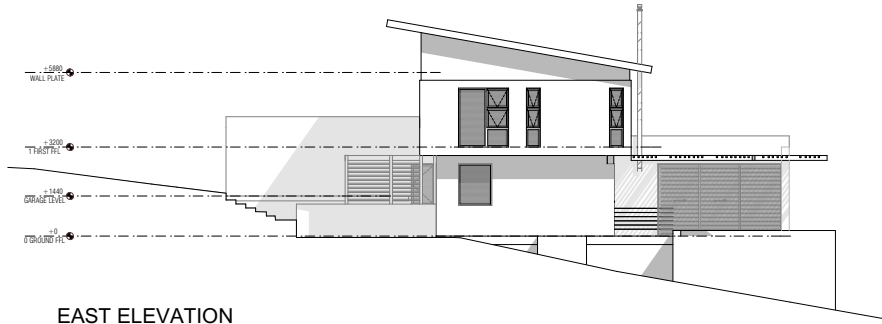
BASEMENT
1:100



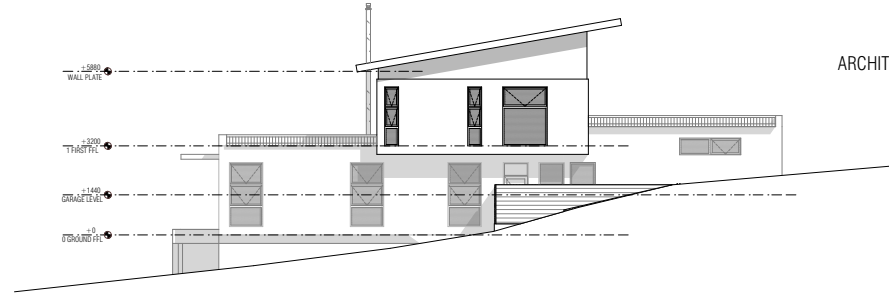
GROUND FLOOR
1:100



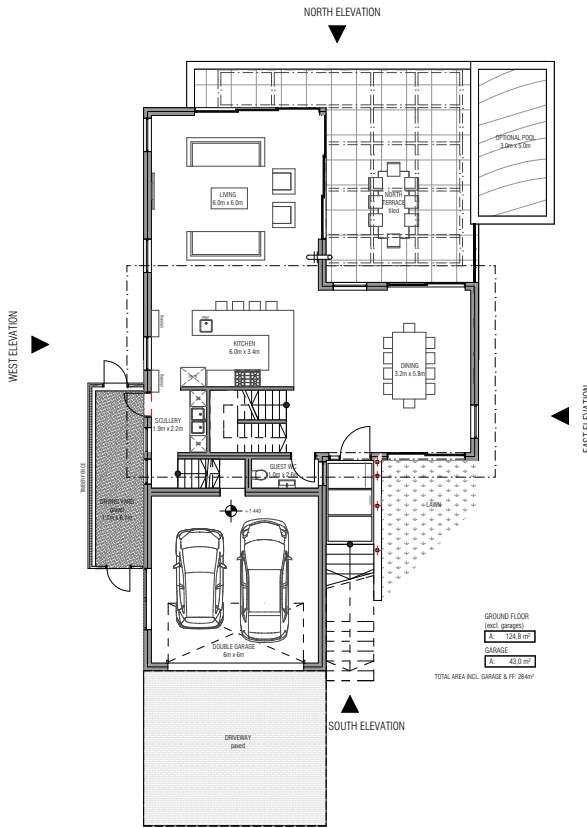
FIRST FLOOR
1:100



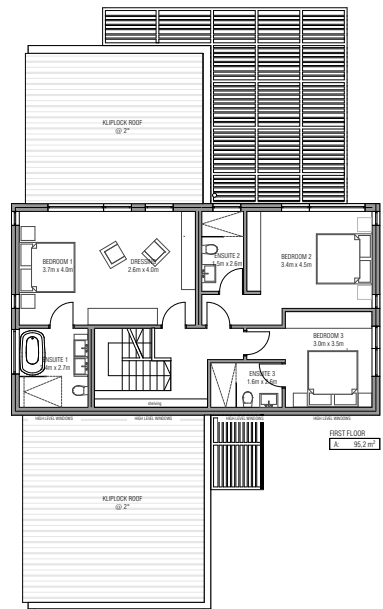
EAST ELEVATION
1:100



WEST ELEVATION
1:100



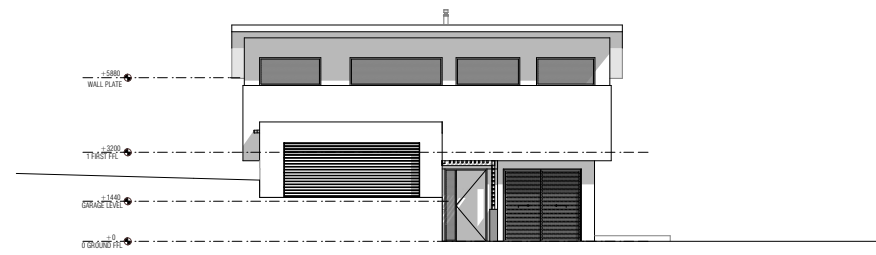
GROUND FLOOR
1:100



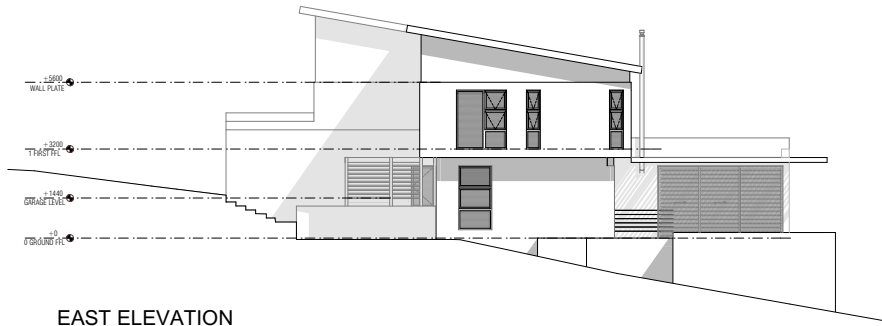
FIRST FLOOR
1:100



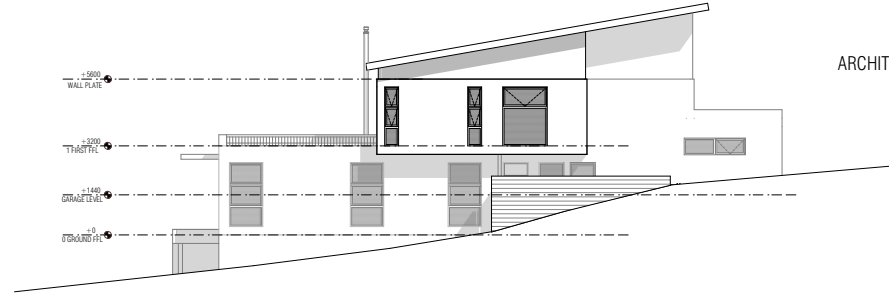
NORTH ELEVATION
1:100



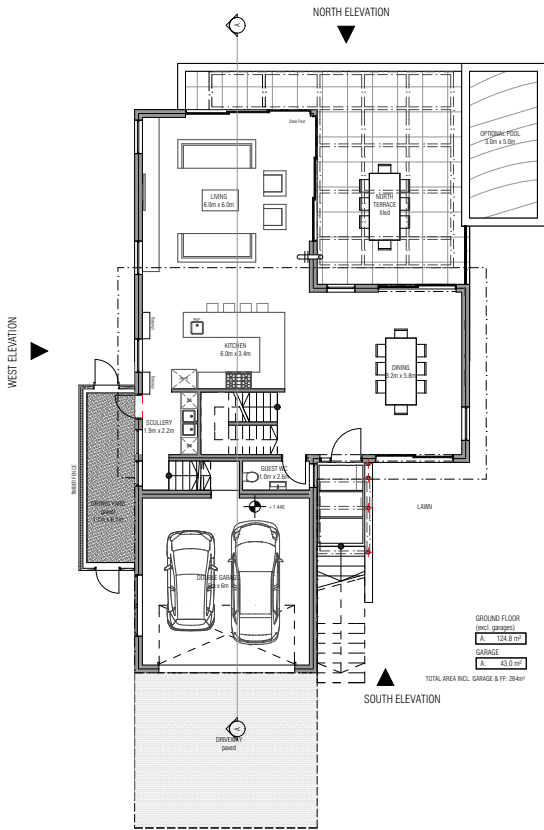
SOUTH ELEVATION
1:100



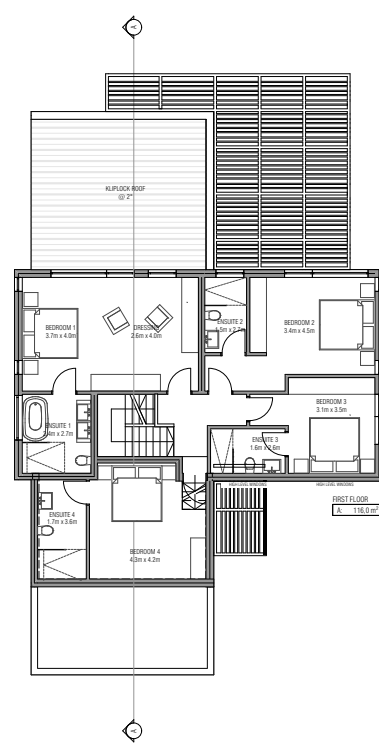
EAST ELEVATION
1:100



WEST ELEVATION
1:100



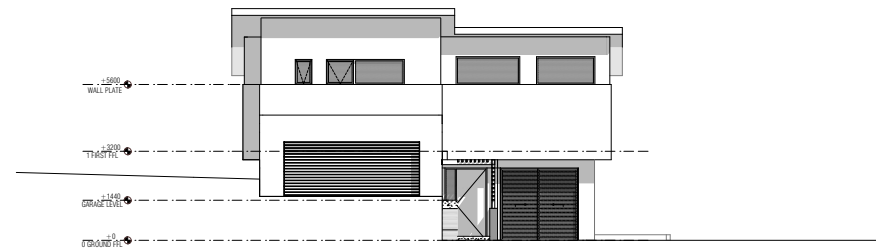
GROUND FLOOR
1:100



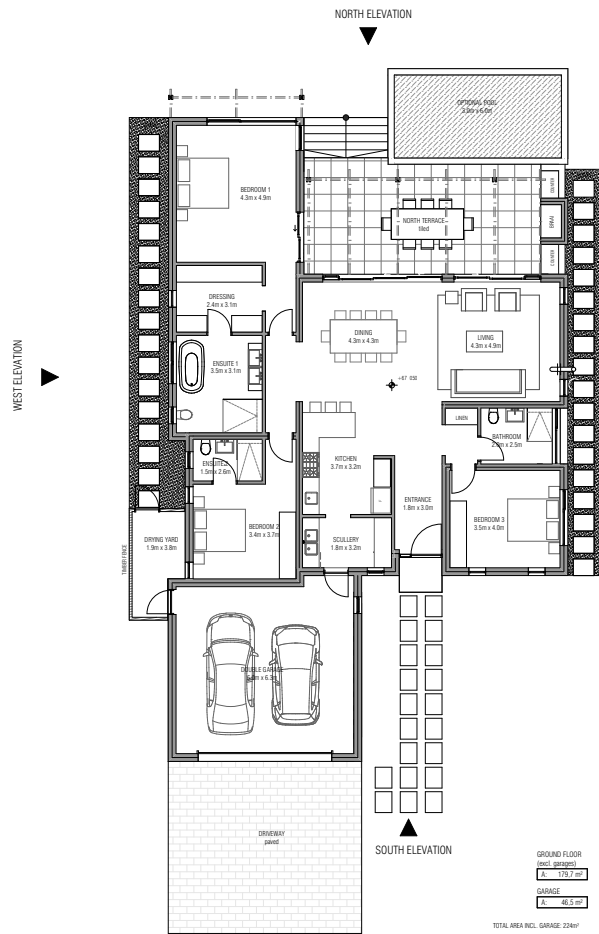
FIRST FLOOR
1:100



NORTH ELEVATION
1:100



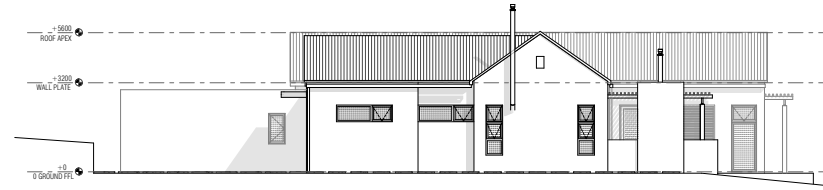
SOUTH ELEVATION
1:100



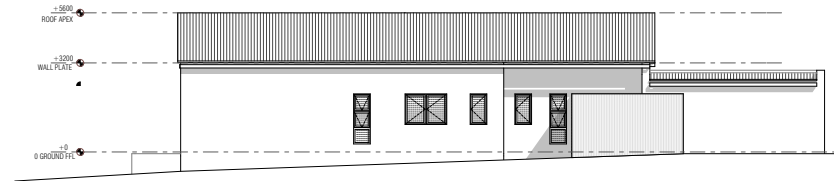
GROUND FLOOR
1:100



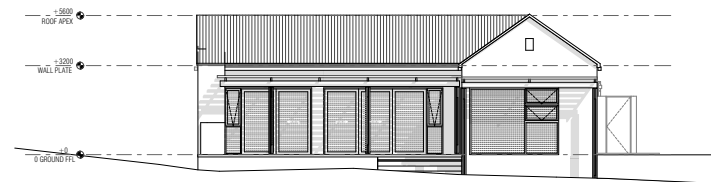
TOTAL AREA INCL. GARAGE: 224m²



EAST ELEVATION
1:100



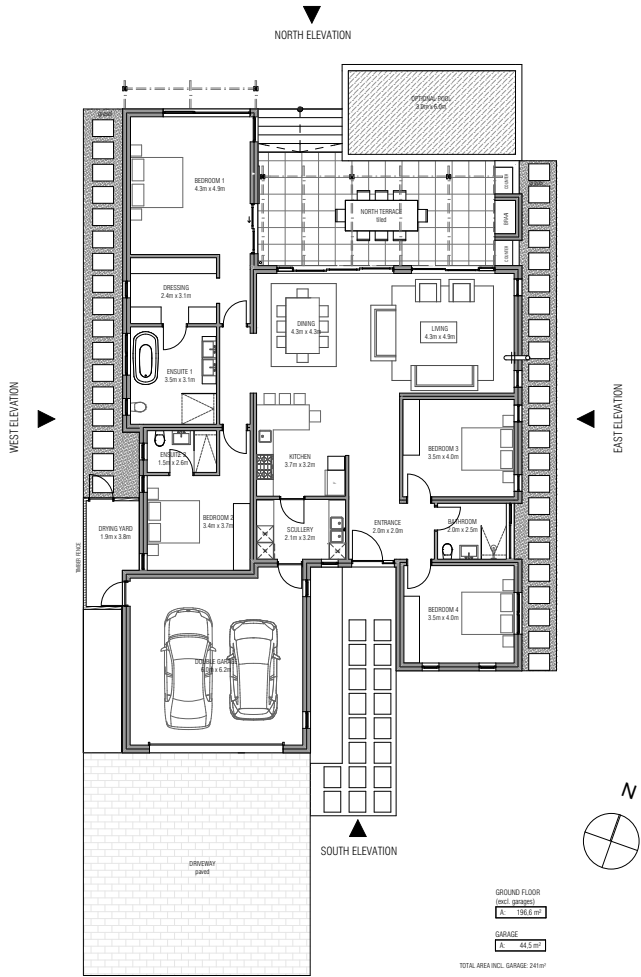
WEST ELEVATION
1:100



NORTH ELEVATION
1:100



SOUTH ELEVATION
1:100

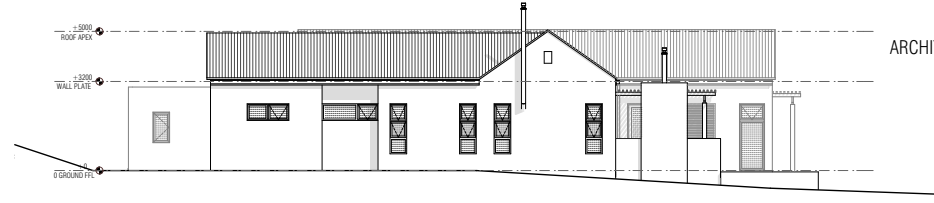


GROUND FLOOR PLAN
1:100

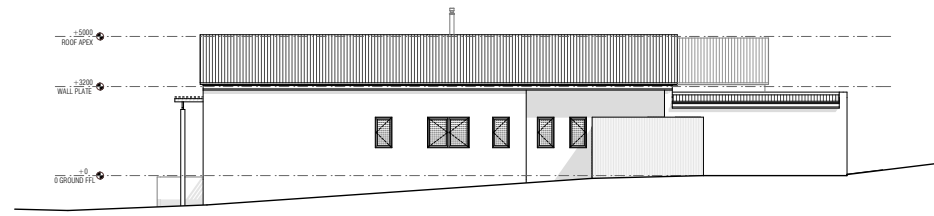
GROUND FLOOR
incl. garage
168.1 m²

GARAGE
44.2 m²

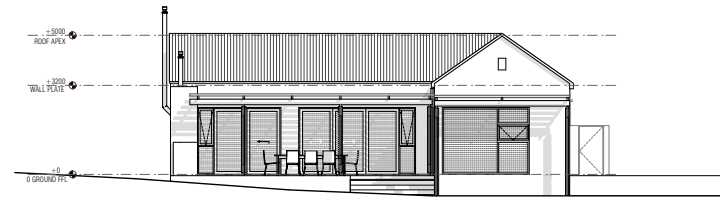
TOTAL AREA INCL. GARAGE: 212.3 m²



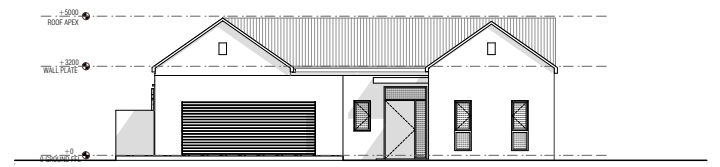
EAST ELEVATION
1:100



WEST ELEVATION
1:100

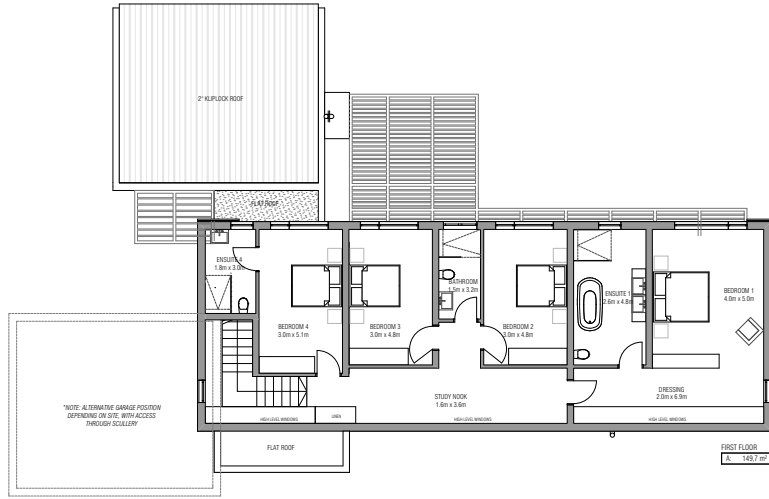


NORTH ELEVATION
1:100

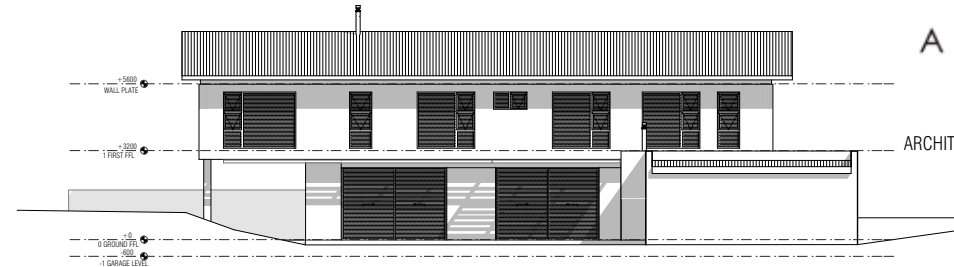


SOUTH ELEVATION
1:100

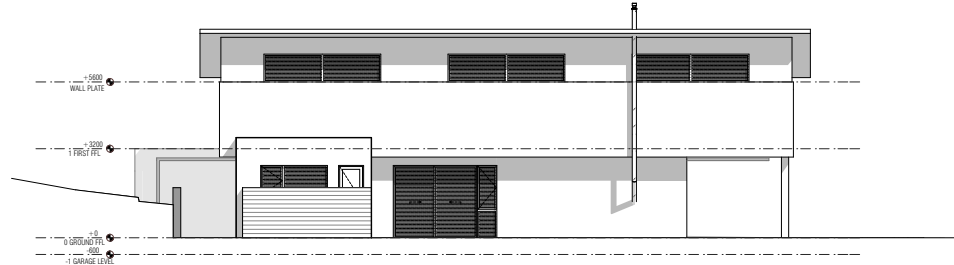




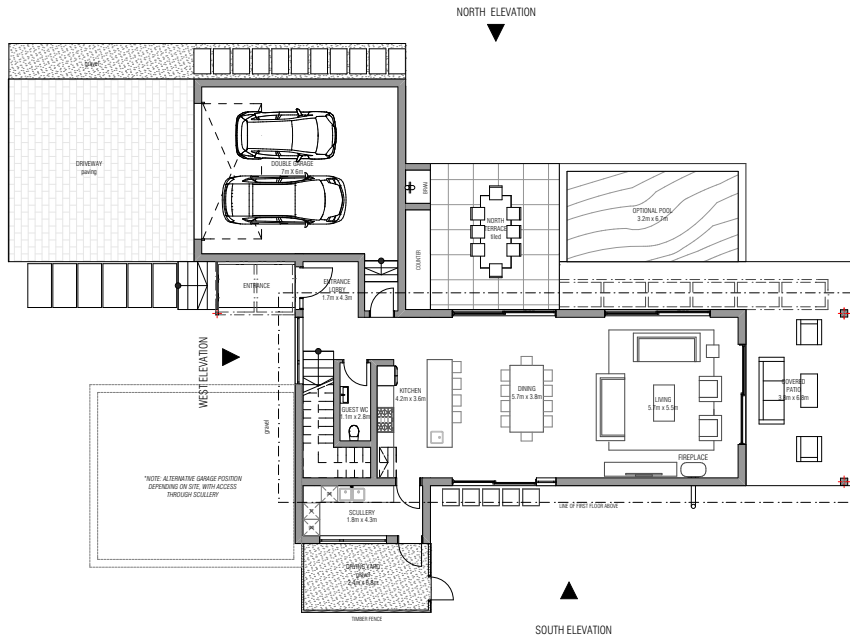
FIRST FLOOR PLAN
1:100



NORTH ELEVATION
1:100



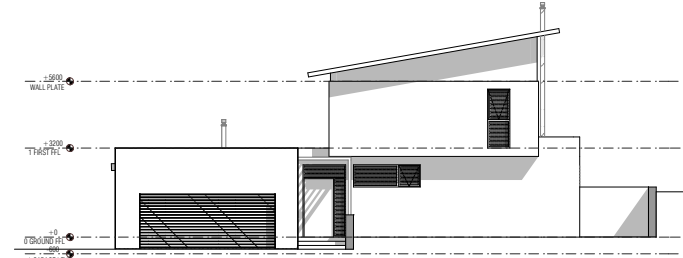
SOUTH ELEVATION
1:100



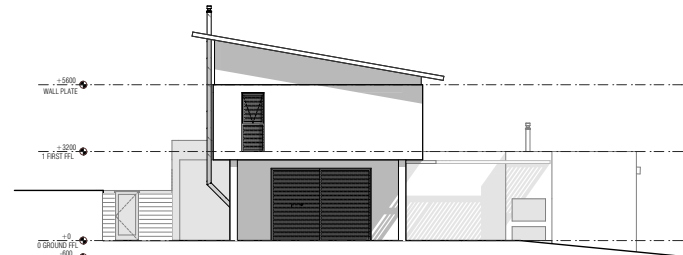
GROUND FLOOR PLAN
1:100



EAST ELEVATION

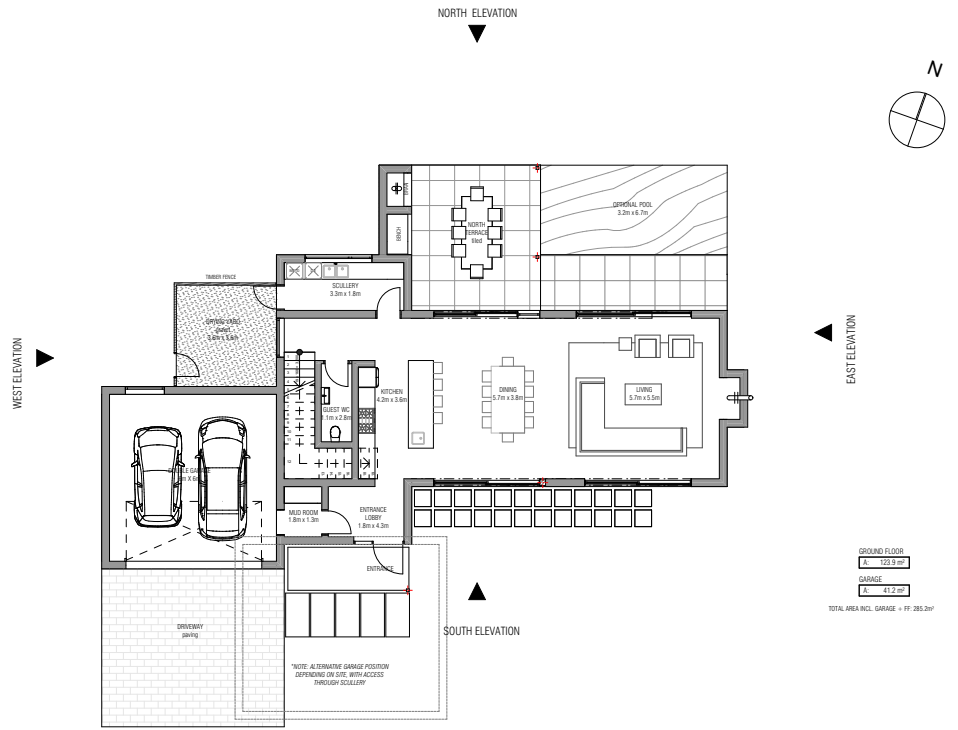


WEST ELEVATION
1:100

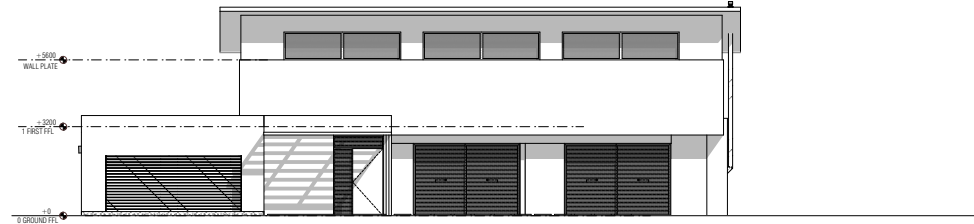


EAST ELEVATION
1:100

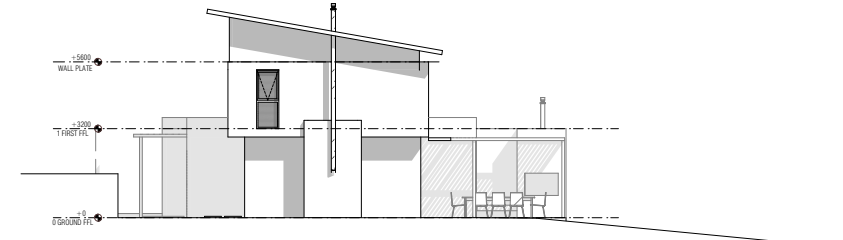
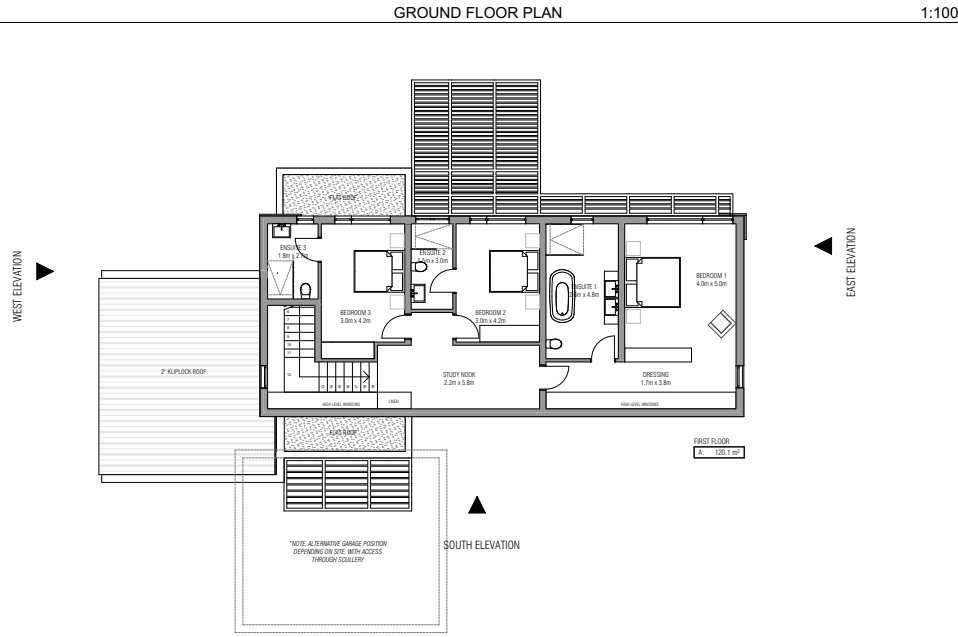
GROUND FLOOR
A 110.5 SQM
GARAGE
B 9.9 SQM
TOTAL AREA INCL GARAGE = 120.4 SQM



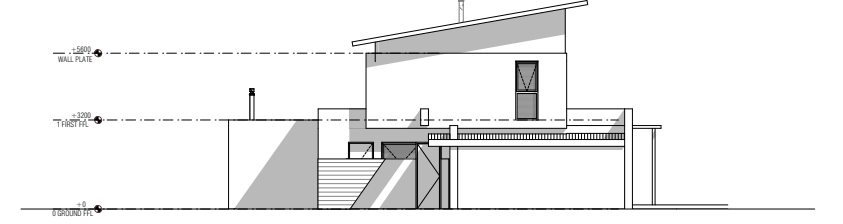
NORTH ELEVATION 1:100



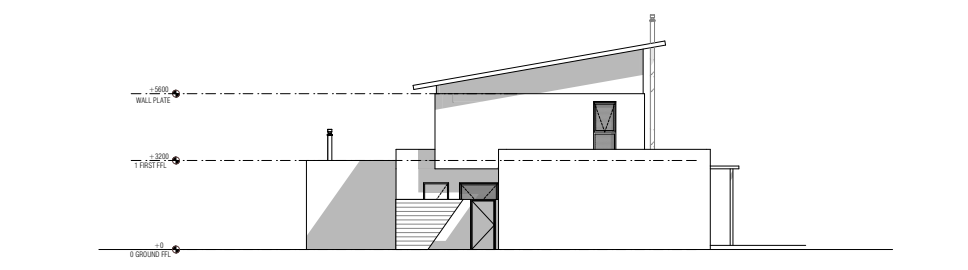
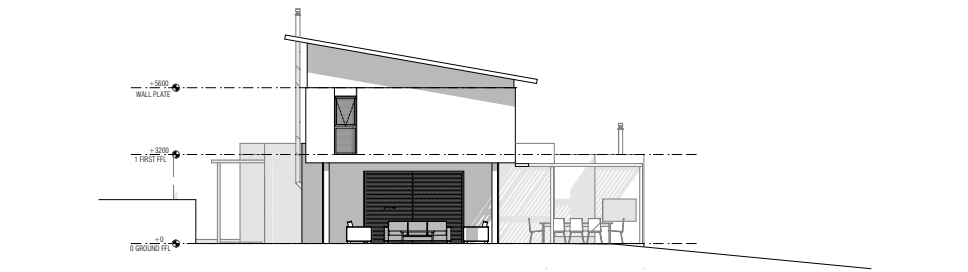
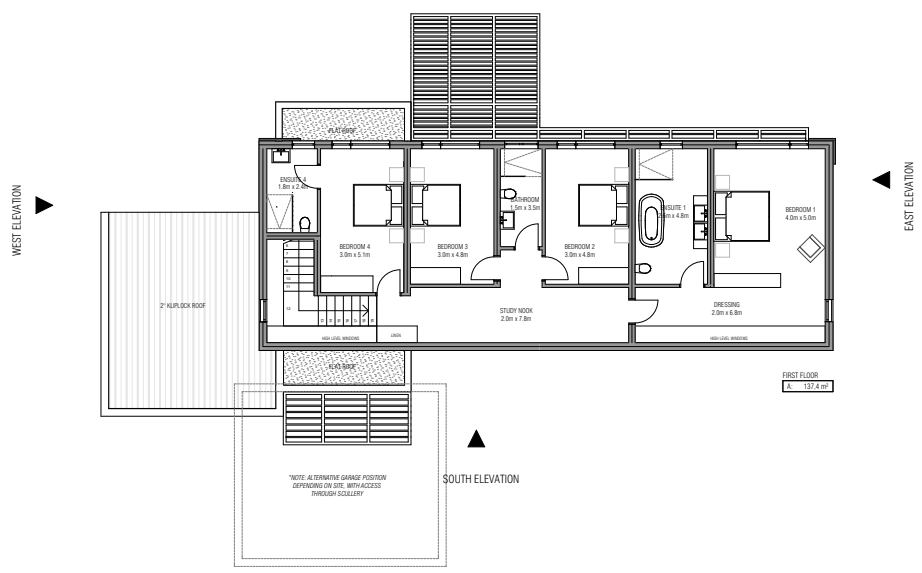
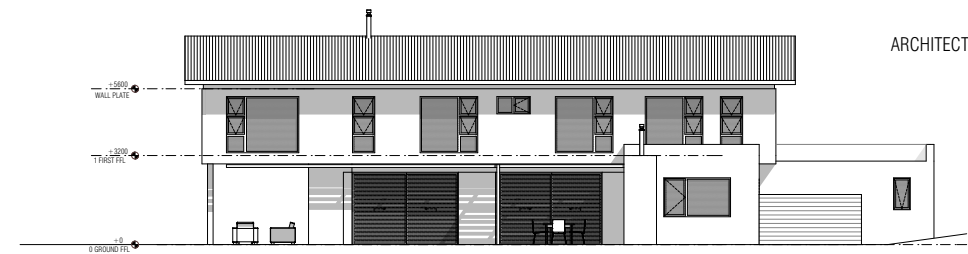
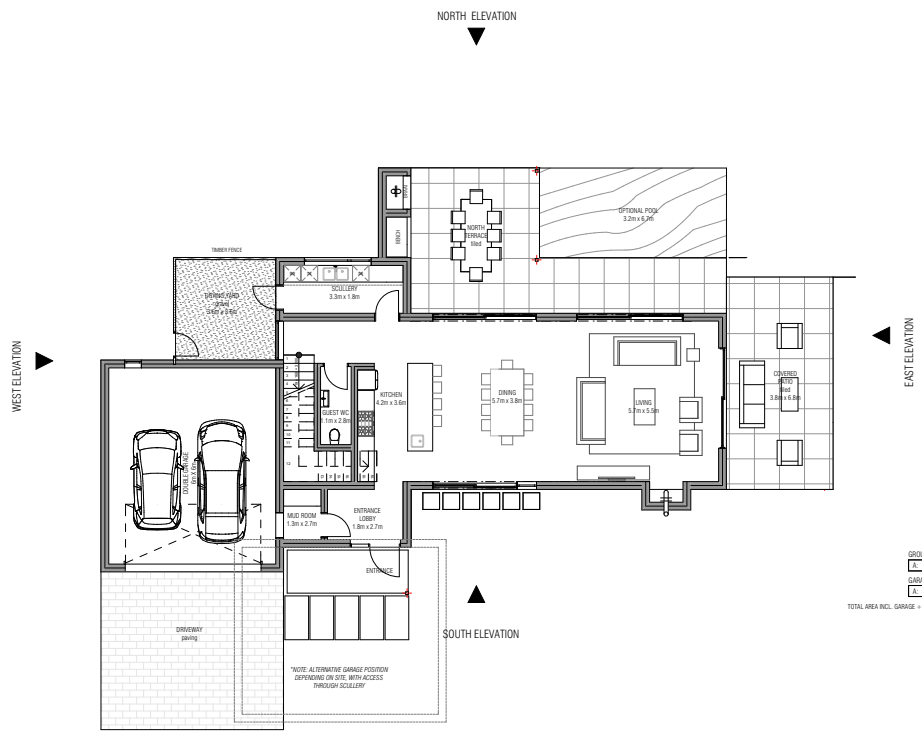
SOUTH ELEVATION 1:100



EAST ELEVATION 1:100



WEST ELEVATION 1:100



GROUND FLOOR
133.8 m²
GARAGE
46.9 m²
TOTAL AREA INCL. GARAGE = FF. 180.7

