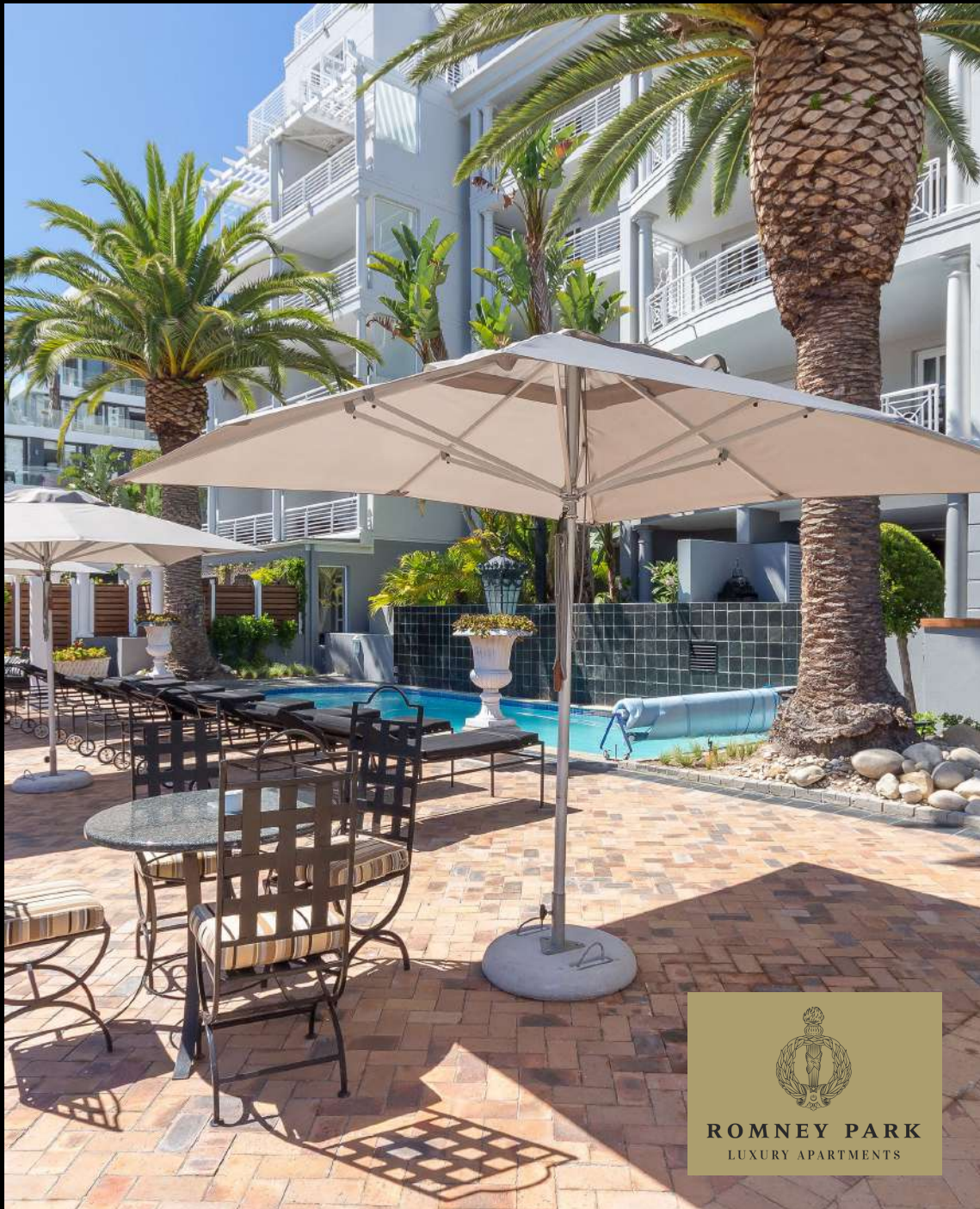




DOGON | GROUP

PROPERTIES

ROMNEY PARK FLOOR PLANS



ROMNEY PARK
LUXURY APARTMENTS

HEAD OFFICE **021 433 2580**

dogongroup.com

A visionary company with decades of experience



DOGON | GROUP

PROPERTIES

COMPANY PARTICULARS

Established in 2002 and founded by Denise Dogon, Dogon Group Properties has proven to be a true real estate success story. The Dogon name has become synonymous with the proficient and effective marketing and selling of premium grade properties in Cape Town and particularly the sought-after Atlantic Seaboard. Dogon Group currently have offices in high profile positions in Sea Point and Southern Suburbs.

Dogon Group Properties prides itself on its unique and focused approach to marketing and sales, providing a comprehensive and tailored solution to ensure that sales occur at the optimum price within a compressed space of time. The company utilizes an evolved and distinctive sales force of highly adept and skilled sales agents who are selected for their extensive experience, professionalism and successful track records.

Headed by Managing Director Alexa Horne, Dogon Group has a dedicated in-house marketing department ensuring that focused and specialized marketing strategies are implemented. The powerful proprietary Dogon Group database combined with its eye-catching and prominent advertising, both in print and digital media, together with our visible network of sales offices support our strong performance on the Western Cape's Atlantic Seaboard, Southern Suburbs, Western Seaboard and surrounding areas.

DOGON GROUP PROPERTIES (PTY) LTD
REGISTRATION NO: 2002/020365/07
ALEXA HORNE (MANAGING DIRECTOR)

P O BOX 605 SEA POINT 8060
THE KINGS, 101 REGENT ROAD
SEA POINT, SOUTH AFRICA
TEL +27 21 433 2580
FAX +27 21 433 2781

SALES AGENTS



ALISON ROBB
082 956 9506

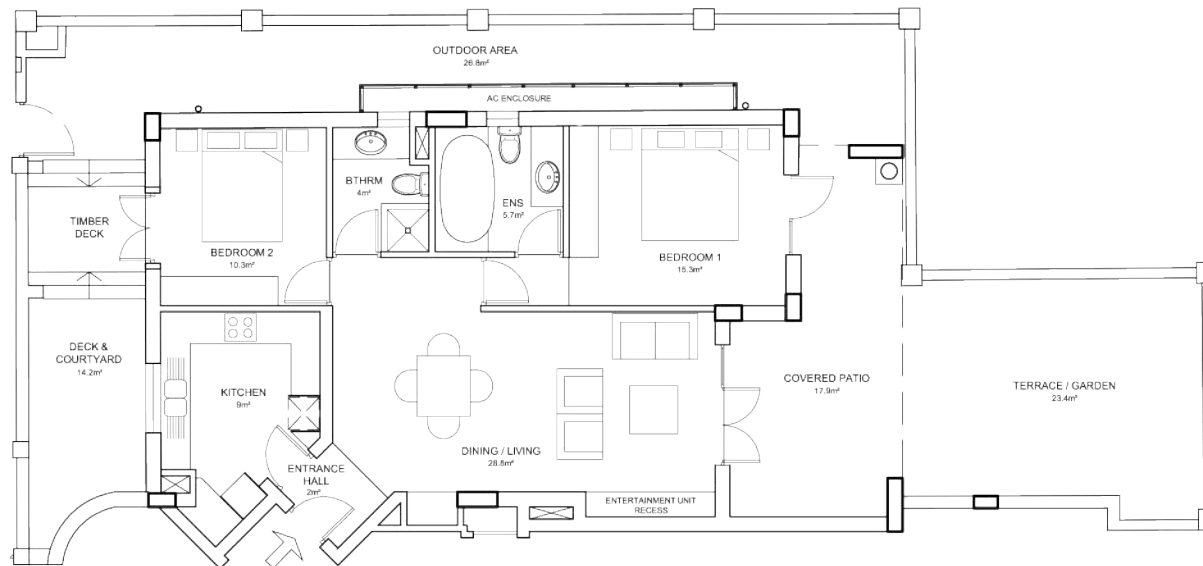


JAKE WEEDEN
082 889 7056

HEAD OFFICE 021 433 2580

dogongroup.com

A visionary company with decades of experience

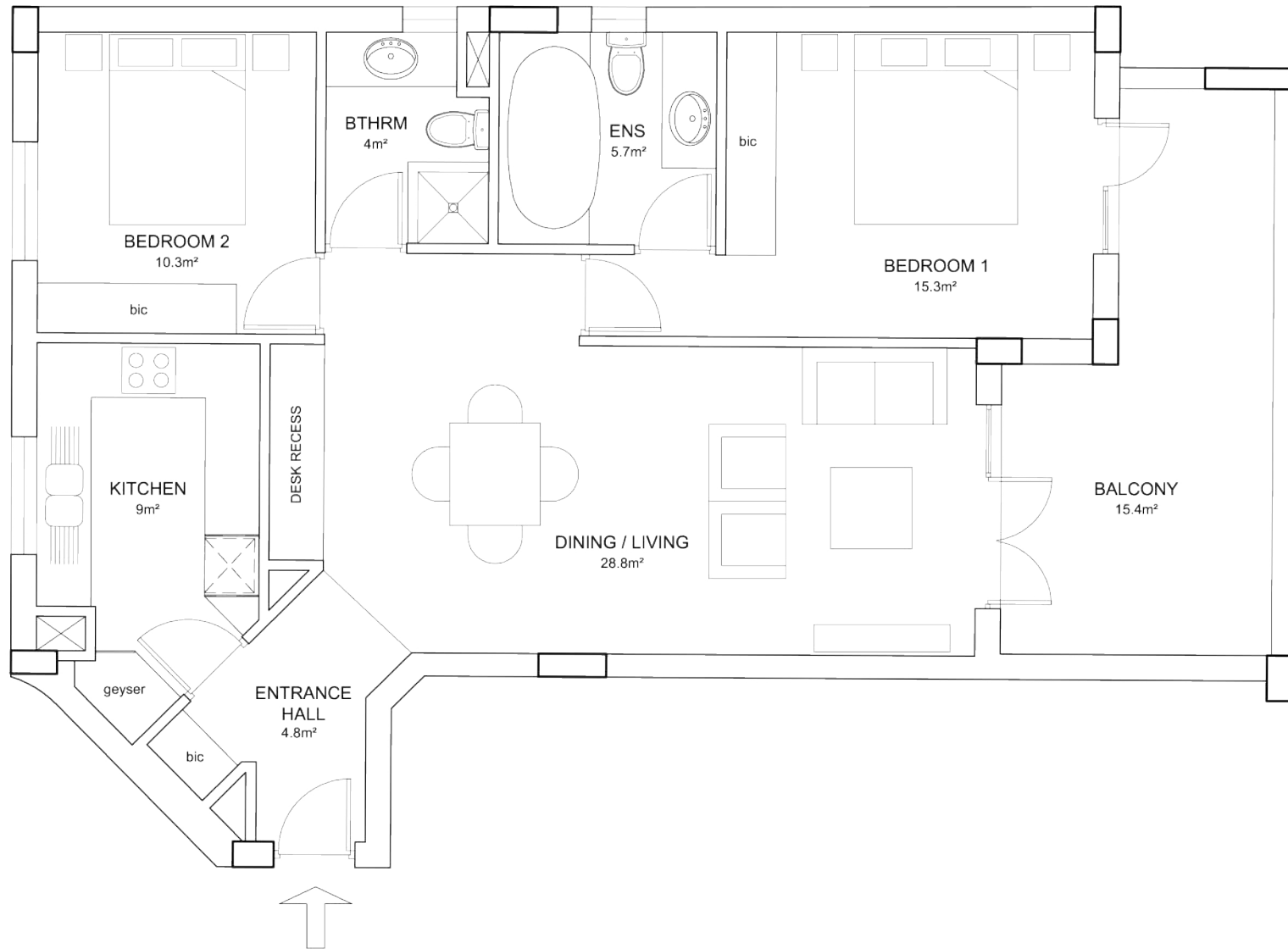


Note: AC Enclosure is for this unit and others.

Sectional Area:

Section/Unit 101 (as per surveyor)	=	102m ²
External Area	=	63.4m ²
Participation quota percentage	=	3.5064% (to recalculated by surveyor)

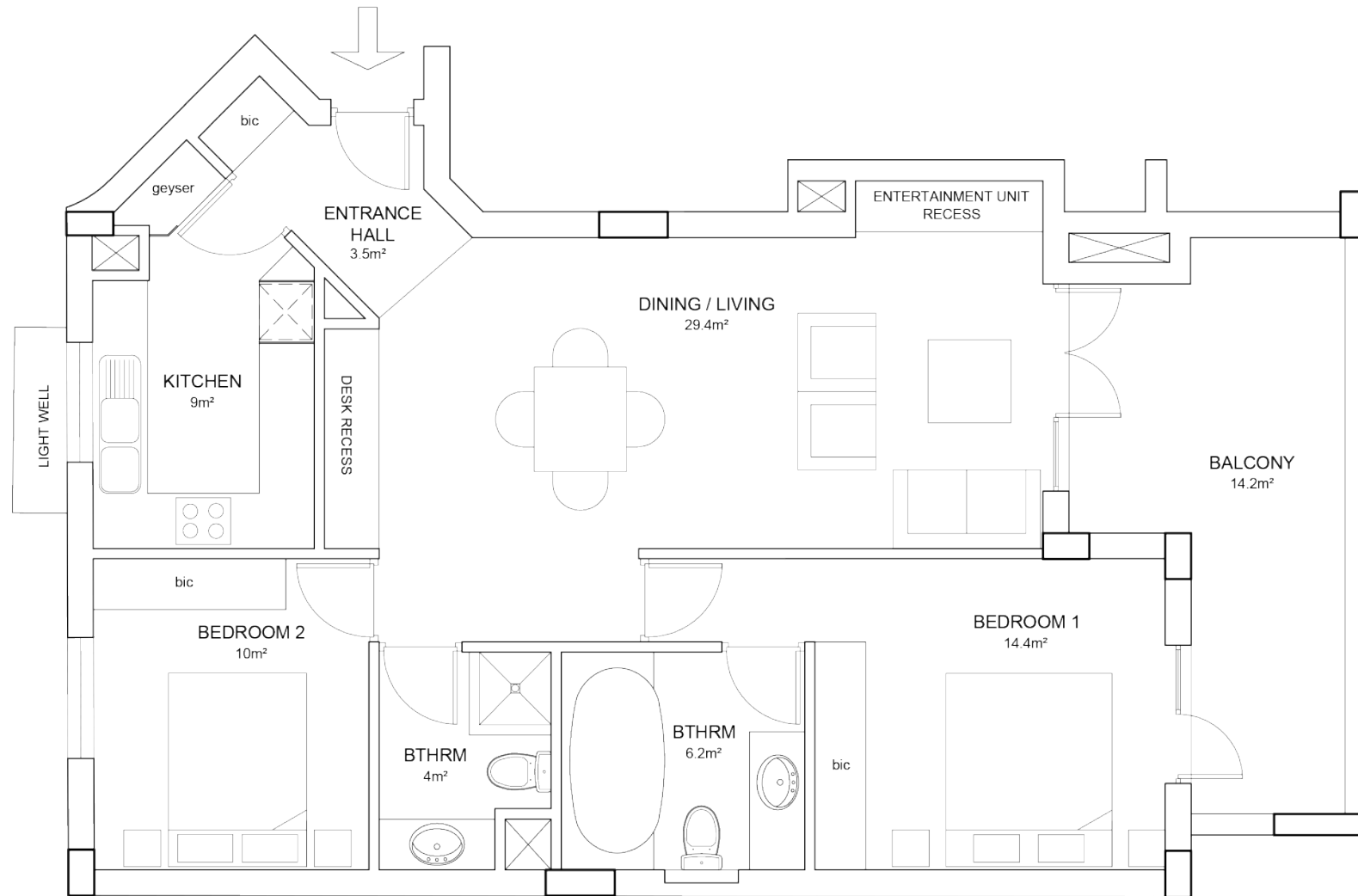
Romney Park
Apartment 101



Sectional Area:

Section/Unit 201 (as per surveyor) = 102m²
 Participation quota percentage = 3.5064% (to be recalculated by Surveyor)

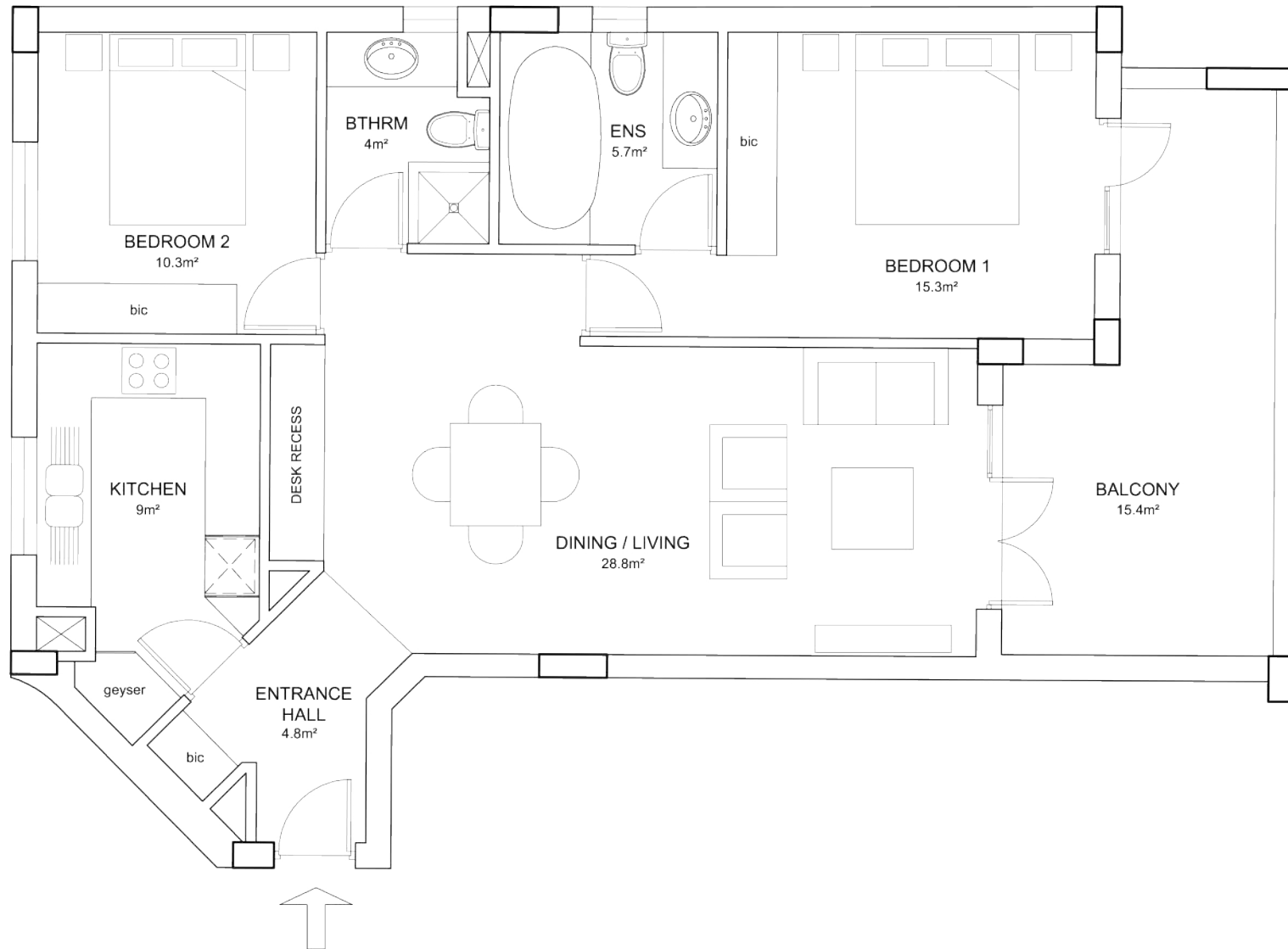
Romney Park
 Apartment 201



Sectional Area:

Section/Unit 203 (as per surveyor) = 101m²
 Participation quota percentage = 3.4577%

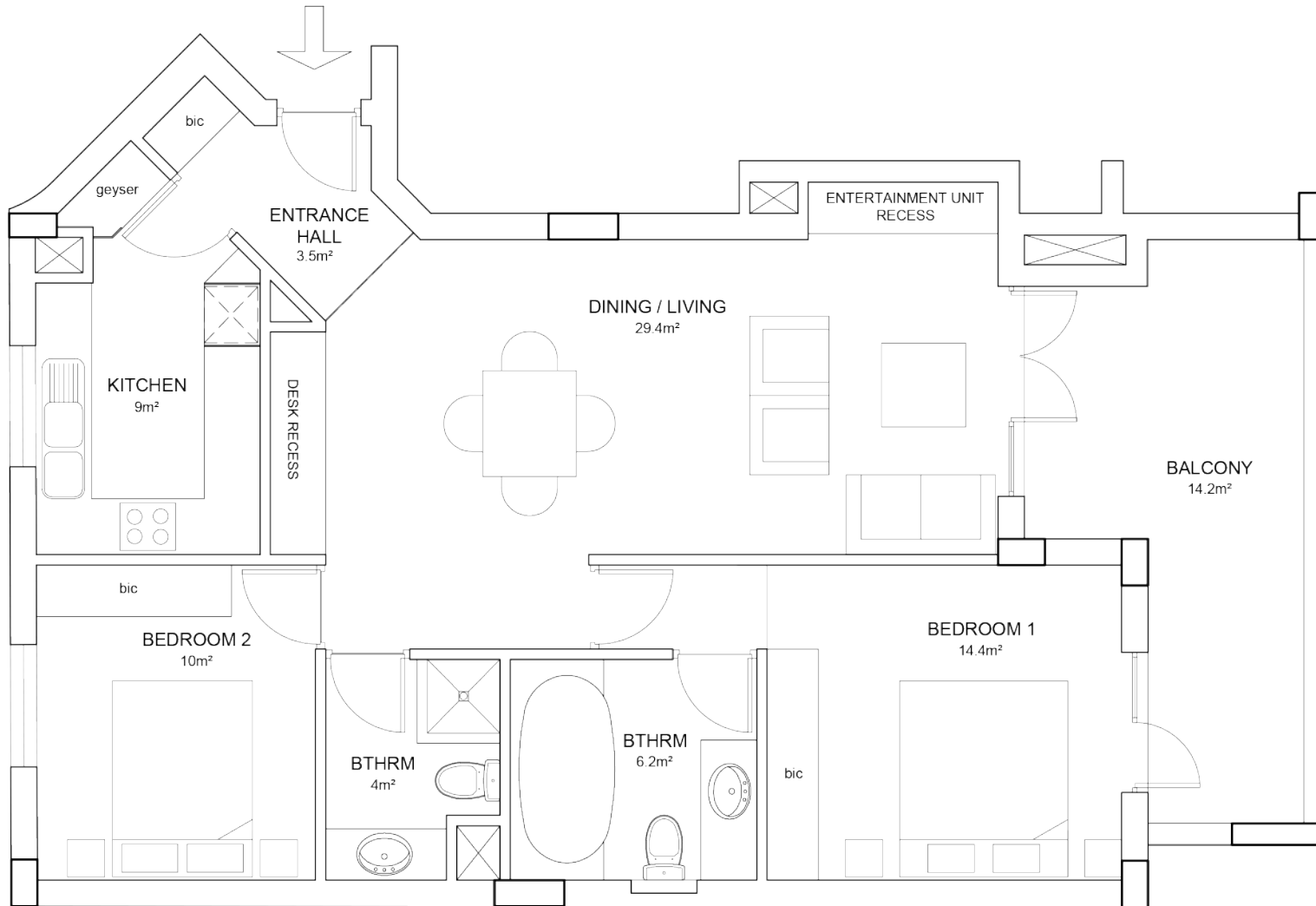
Romney Park
 Apartment 203



Sectional Area:

Section/Unit 301 (as per surveyor) = 102m²
 Participation quota percentage = 3.5064% (to be calculated by Surveyor)

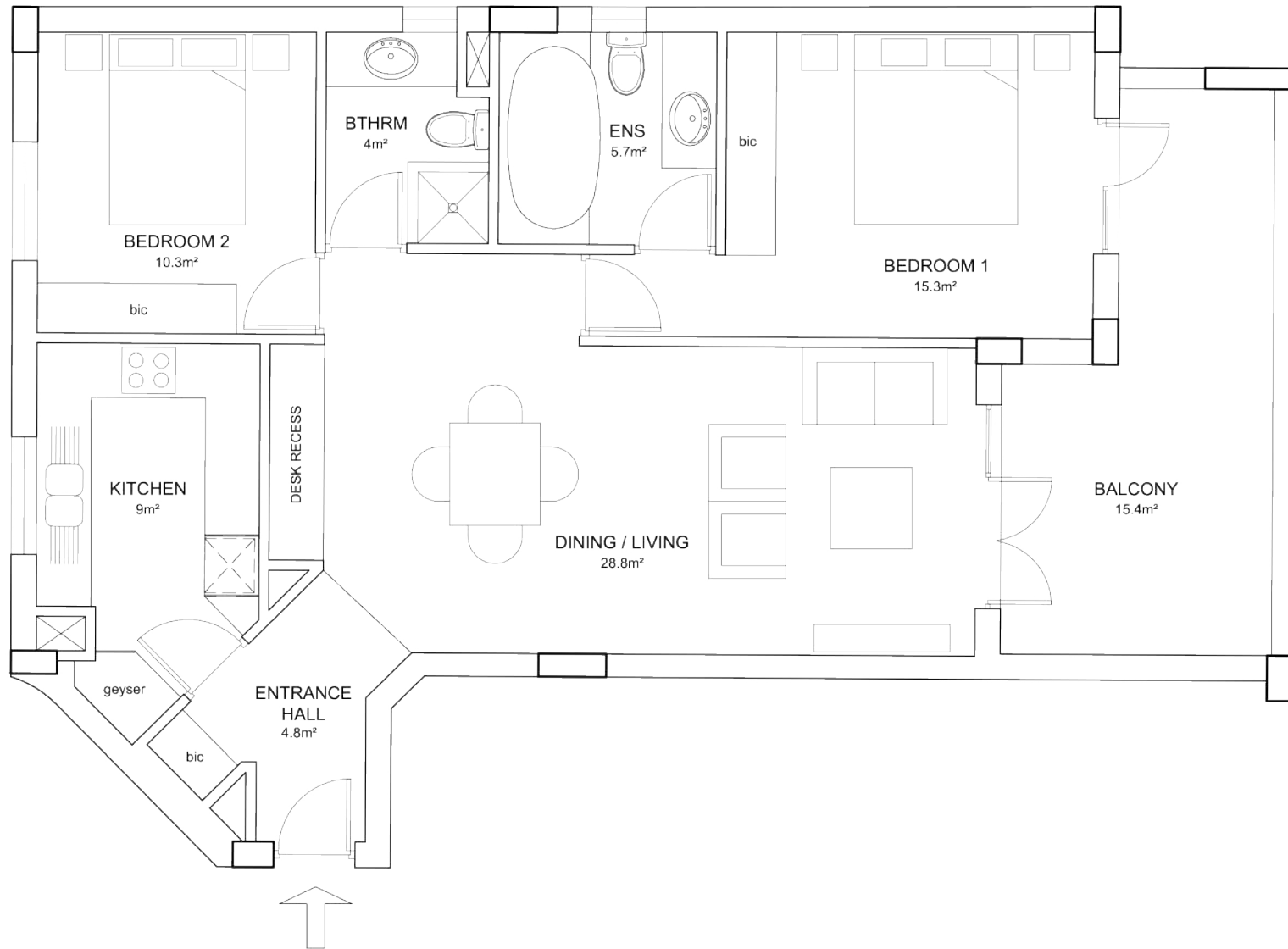
Romney Park
 Apartment 301



Sectional Area:

Section/Unit 303 (as per surveyor) = 102m²
 Participation quota percentage = 3.4920%

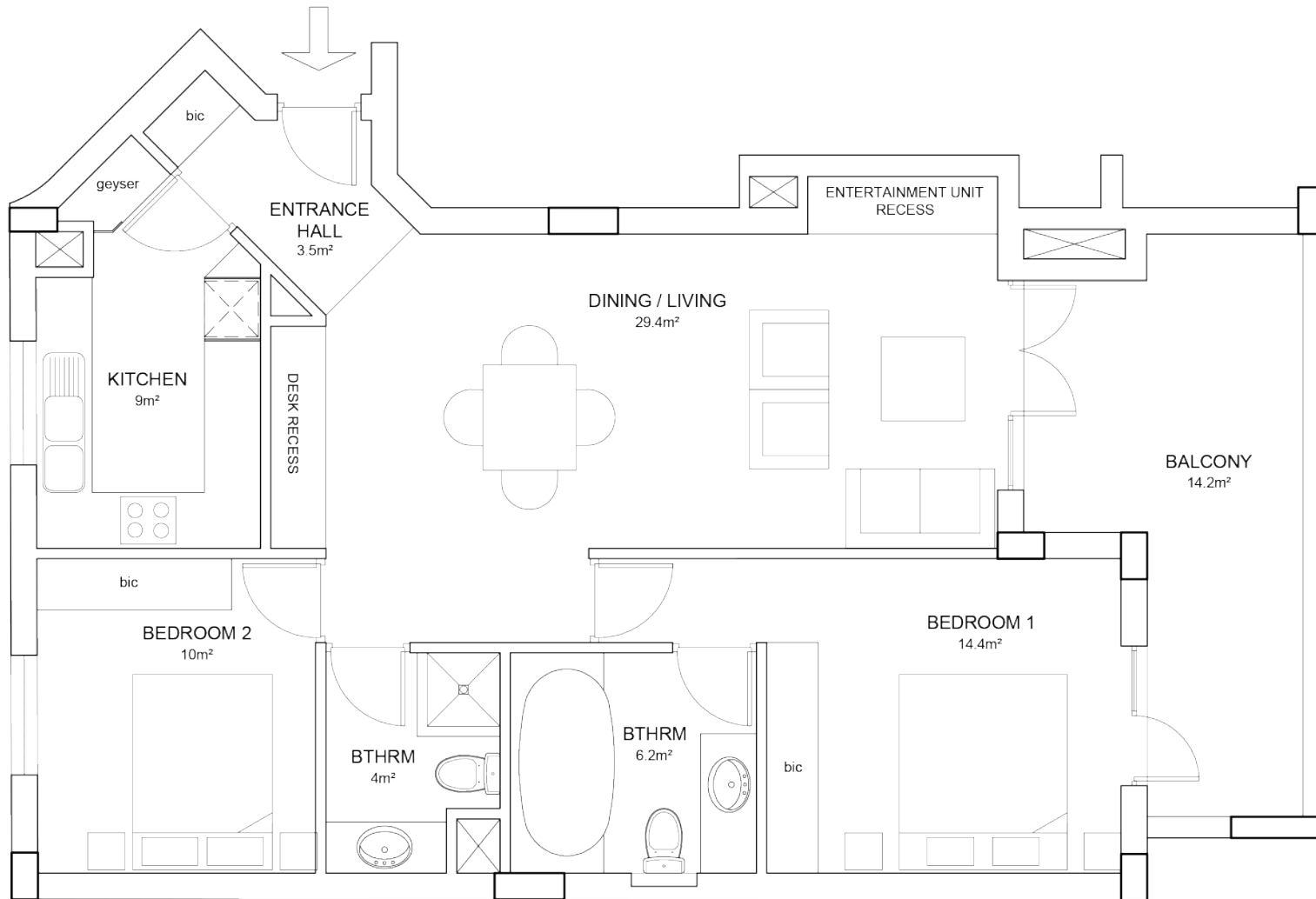
Romney Park
 Apartment 303



Sectional Area:

Section/Unit 401 (as per surveyor) = 103m²
 Participation quota percentage = 3.5407% (to be recalculated by Surveyor)

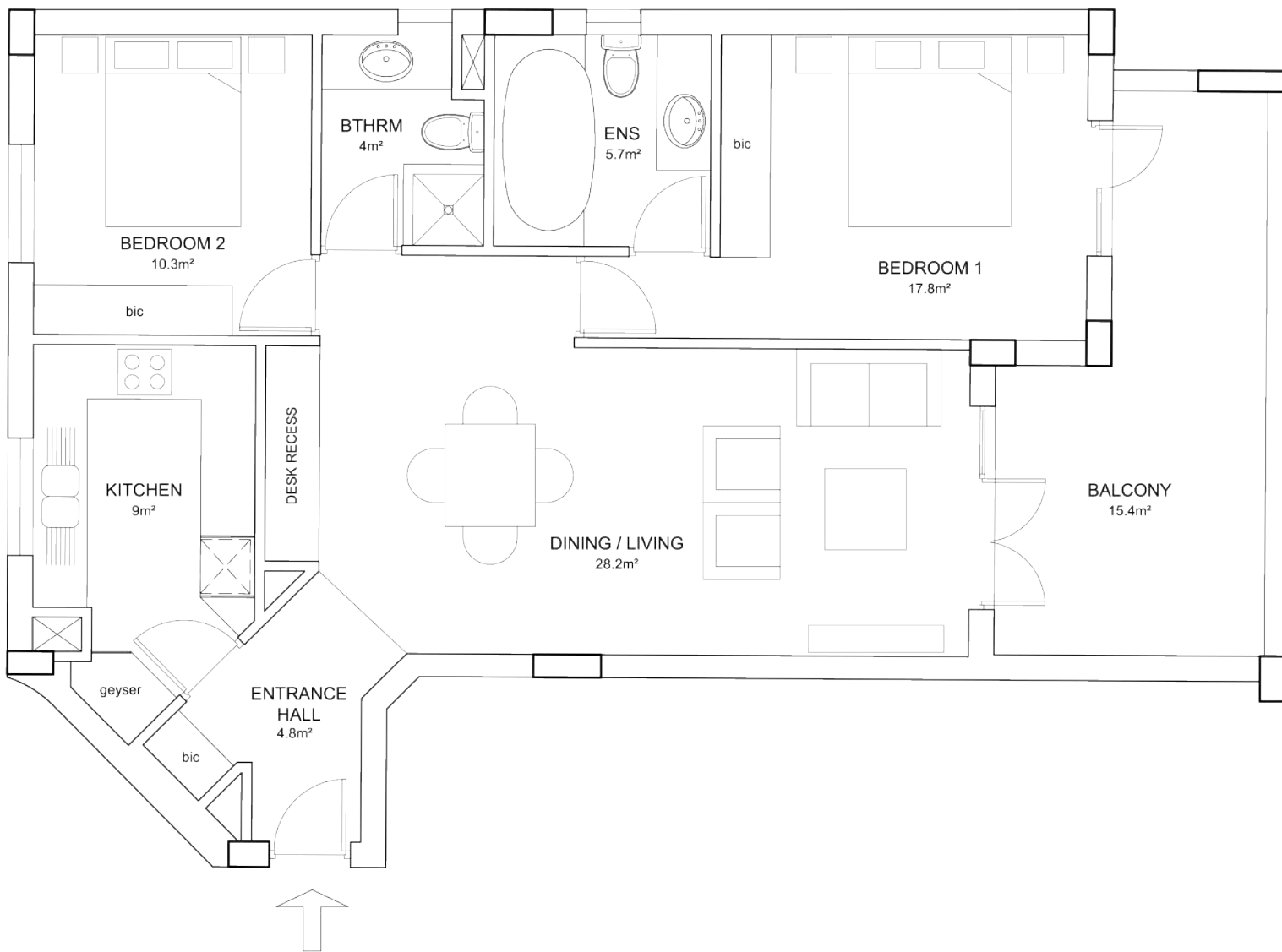
Romney Park
 Apartment 401



Sectional Area:

Section/Unit 403 (as per surveyor) = 102m²
 Participation quota percentage = 3.4920%

Romney Park
 Apartment 403



Sectional Area:

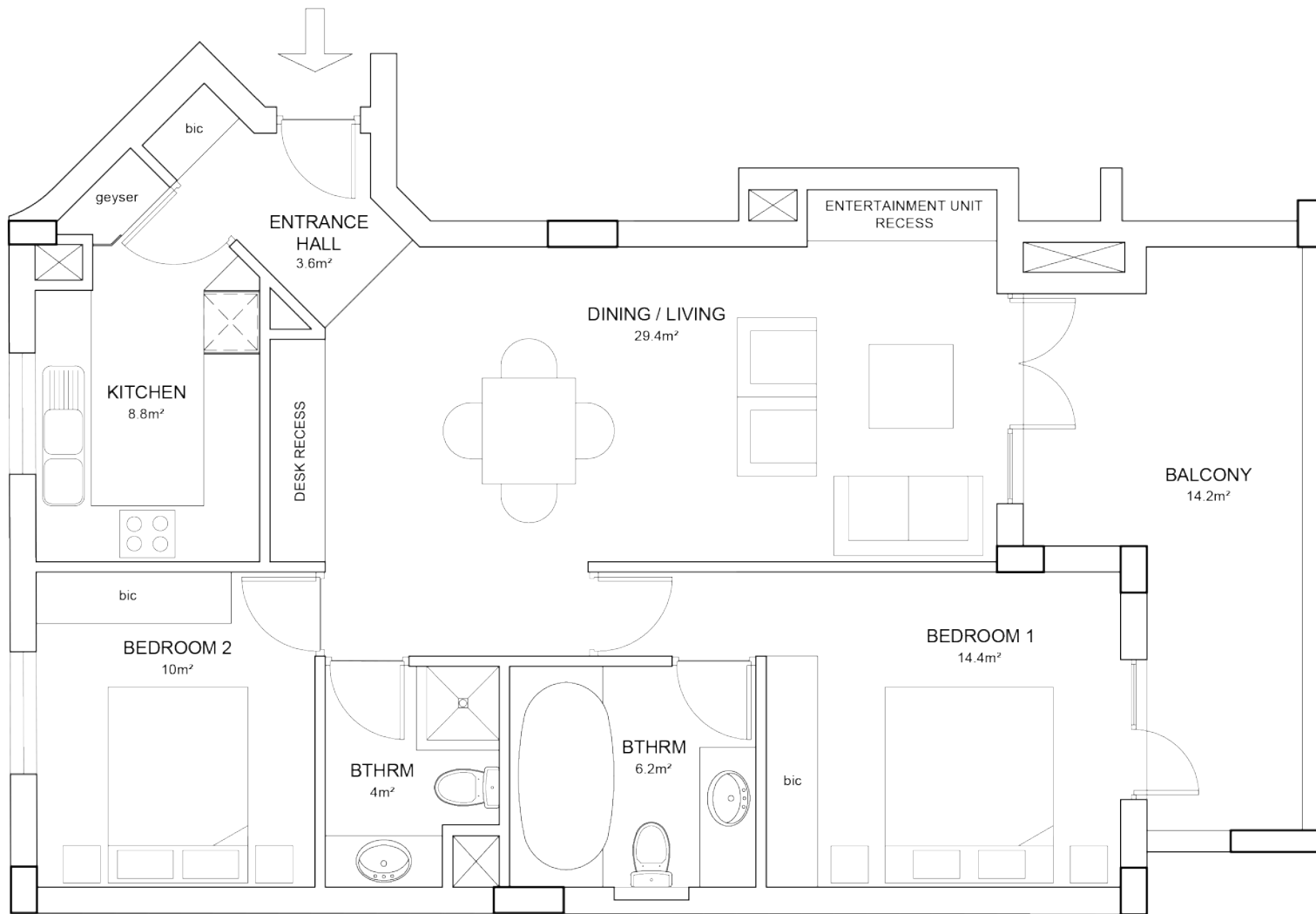
Section/Unit 501 (as per surveyor) =

102m²

Participation quota percentage =

3.5064% (to be recalculated by Surveyor)

Romney Park
Apartment 501



Sectional Area:

Section/Unit 503 (as per surveyor) = 102m²
 Participation quota percentage = 3.492%

Romney Park
 Apartment 503